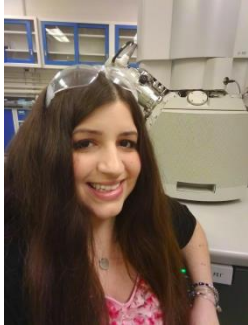


SWE Region F Collegiate Officers Ballot for FY18



Genevieve Kane, RPI Section, Candidate for Region Collegiate Senator

Hello Region F Collegiates! My Name is Genevieve Kane and I am a graduate student at Rensselaer Polytechnic Institute studying Materials Science and Engineering. I attended both the University at Albany (SUNY) and SUNY New Paltz for my undergraduate education, where I majored in Physics, Electrical Engineering, and Music. I have been an active member of SWE since my undergrad, where I introduced SWE programming to both of my college campuses, starting the first active SWE memberships on those campuses. These efforts lead to increased partnership and interaction between women academics, graduate students, and undergraduates, fostering a better environment for STEM females in our schools.

As I witnessed the positive impacts of these programs to my undergraduate community, I wanted to continue the SWE message and initiative further. In 2015, I became the Region F Graduate Representative, where I championed region conference programming for collegiates including rapid fire talks, poster session, and the speed mentoring and resume review sessions that became integral to conference programming. In addition, I also became a representative to the society Outreach Committee for Region F, and a member of the society Women in Academia (WIA) committee. My primary functions in WIA include representing an active voice for collegiates, and encouraging the committee to actively pursue collaborations with students to ensure adequate mentoring for both undergraduate and graduates, and programming assistance during conferences.

Currently, as the FY17 Graduate Member Coordinator-Elect of GradSWE, I have an active voice at the society level. Over the past year, I have started a mentoring initiative where collegiates get connected to professional members so that they have guidance and counsel for STEM careers in academia, industry and government. I am also striving to push international university partnerships between collegiate sections, and our international affiliate groups. This is planned take place in FY18 to further collegiate globalization of SWE.

This is an exciting and important time in SWE as the society transitions and restructures from region based leadership. An experienced, strong collegiate voice is critical in the coming months, as the senate continues to vote on restructuring issues affecting student participation at the society level. I offer that experience, with my years of service at the region and society level. I hope that as your RCS, I can continue to be that voice, making sure collegiates in our Region are heard on any senate issues that may include us.

SWE Region F Collegiate Officers Ballot for FY18



Shasha Graves, University of Connecticut Section, Candidate for Region Collegiate Senator

Shasha Graves is currently a junior pursuing a degree in Biomedical Engineering at the University of Connecticut. After joining SWE as a freshman, Shasha got more involved in her section through being elected as the Recruitment Chair and New Member Co-Chair in her second semester of her freshman year. In these positions, she shared her passion for SWE with her peers to increase membership and create a greater sense of community. Seeking even greater involvement, the following year Shasha was elected to her section's E-board as the secretary where she strengthened communication between her fellow officers and members through a creative approach. SWE has made such a positive impact in her life and she is eager to give back and get even more involved in SWE as a whole, especially amidst all the exciting changes happening in the society.



Zaire Johnson, RPI Section, Candidate for Region Collegiate Representative

Hello!

I'm Zaire Johnson, a sophomore at Rensselaer Polytechnic Institute. In FY17 I served Region F as the Region Collegiate Communications Editor. Through that experience I was given a taste of the behind-the-scenes work that happens to keep our region alive and well!

Regionally, collegiate sections are focused on improving their school community and expanding their outreach events. As a Collegiate Representative, I'd love to create a network between the colleges and universities that I'd be in contact with. By answering questions and continuing a dialogue between myself and collegiate presidents, I can see myself becoming an asset within the SWE collegiate community.

I served as a co-Director of RPI's annual, "Exploring Engineering Day". I am managing a group of 65 volunteers, who will help facilitate the event. The project management experience that I have will definitely serve me well as a Collegiate Representative. I am one of two University

SWE Region F Collegiate Officers Ballot for FY18

Innovation Fellows on RPI's campus, we're helping to build an entrepreneurship ecosystem on our campus. Many of the skills that I've learned in that program are directly transmittable to the responsibilities of the Regional Collegiate Representative.



Alice Connelli, RPI Section, Candidate for Region Collegiate Representative

My name is Alice Connelli and I'm currently a sophomore dual majoring in Biomedical and Mechanical Engineering at Rensselaer Polytechnic Institute. I am applying for the Region Collegiate Representative (RCR) for the upcoming school year.

Since my freshman year, I have been an active member in the RPI Chapter of SWE. I didn't hold a position freshman year, but I was still involved with the activities they held. This past year I served as Co-Engineering Event Director, which is responsible for planning an annual outreach event called Exploring Engineering Day. As co-Chair for this event, my responsibilities include recruiting and organizing more than 100 Rensselaer engineering students who will lead 16 hands-on sessions for 320 girls and boys in grades 3 to 6 and their parents and to lead the event opening and closing sessions.

In addition to my involvement in SWE, I also serve on the RPI Biomedical Engineering Society E-board as treasurer. I am the 3-D Printer Student Technician at RPI, which involves communicating with students about 3-D Printing on campus, providing students with cost estimates for 3-D parts, and then executing their printing jobs. I am an Undergraduate Mentor for Intro to Cellular and Molecular Biology, and I am responsible for assisting students with laboratory tasks. I am also volunteering my time to plan a session about 3-D printing for high school girls for an outreach event called Design Your Future Day. Lastly, I work part time through the School of Engineering to complete administrative tasks relating to outreach events. These tasks include communicating with the parents to confirm program registrations, sending final letters with details about the day of the event, helping with event prep, and compiling program stats from the program evaluation forms.

Throughout my experience at RPI, the majority of opportunities I have been able to experience are thanks to SWE. For this reason, I would like to give back to SWE by serving as a RCR. I believe that the leadership skills I have from the activities mentioned above would make me a great candidate for RCR. I have loved all that I have done with SWE so far and I would love to

SWE Region F Collegiate Officers Ballot for FY18

continue to have more opportunities with SWE, which is why I would appreciate being a RCR for the upcoming school year.



Nhu "Ty" Nguyen, Tufts Section, Candidate for Region Collegiate Communications Editor

Nhu (Ty) Nguyen is a rising Junior pursuing Mechanical Engineering at Tufts University. She has been an active member of Tufts SWE as a freshmen and sophomore representative. Ty helped plan and attended the Region F Leadership Summit, and is attending the WE Local conference this year in Pittsburgh, PA. SWE has been an invaluable part of her college career, helping her connect and find support in her professional career as a woman engineer. Ty is running for the Region Collegiate Communications Editor where she hopes to push her SWE career further. Ty wants to contribute more to the future of SWE and share what SWE has brought her to motivate others.

Outside of SWE, Ty is the captain of Tufts Shotokan Karate where she is responsible for running practices, planning events, and coordinating with coaches and with other universities in Boston area. Ty is also a part of Tufts ASME (American Society of Mechanical Engineers). As corporate relations outreach chair, and now vice president, she has been planning events and coordinate tours with companies for members of ASME at Tufts.